
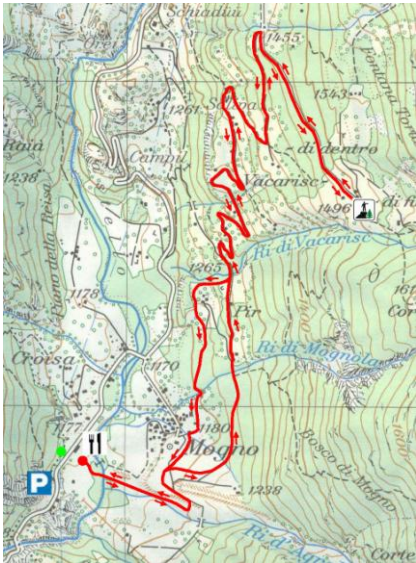






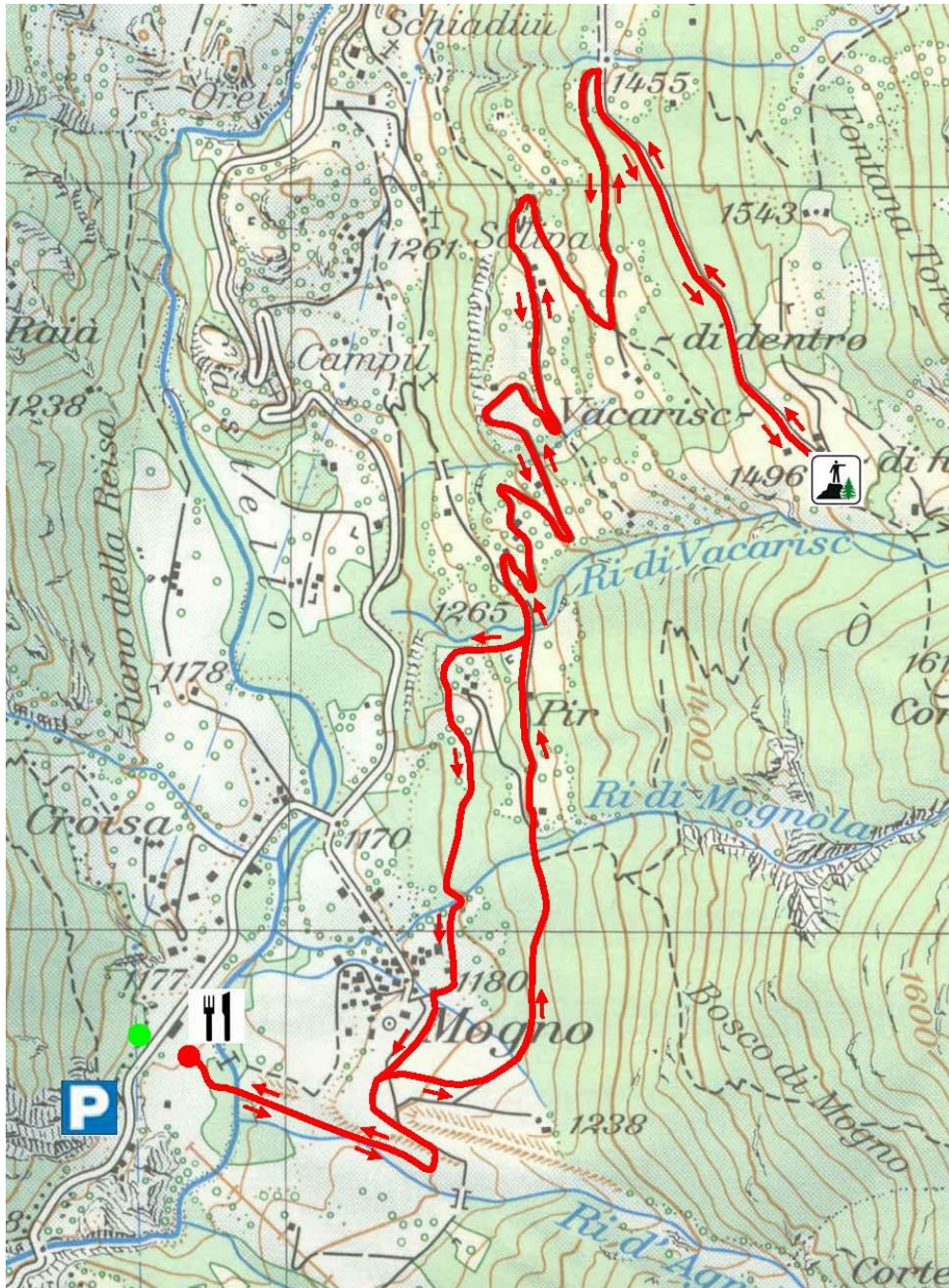


DETTAGLI TRAGITTO PERCORSO No. 3

Luogo	Mogno – Vacarisc
Colore	 rosso
Condizione	Normale
Lunghezza	6 km
Durata	3 h
Quota partenza	1170 m.s.m.
Quota arrivo	1500 m.s.m.
Quota punto più basso	1170 m.s.m.
Quota punto più alto	1500 m.s.m.
Differenza altimetrica	330 m
Dislivello	330 m
Panorama	Ottimo
Descrizione	Percorso su strade agricole e un tratto di sentiero
Arrivo con autopostale	Mogno
Arrivo con mezzo privato	Mogno
Carta	 <ul style="list-style-type: none">  Percorso principale  Punto di partenza e arrivo  Punto panoramico  Ristorante  Fermata Autopostale  Parcheggio

PERCORSO No. 3



- | | | | |
|--|----------------------------|--|-----------------------------------|
| | Percorso principale | | Punto di partenza e arrivo |
| | Ristorante | | Punto panoramico |
| | Parcheggio | | Fermata Autopostale |